

COPYRIGHT © Hangzhou EZVIZ Software Co., Ltd. ALL RIGHTS RESERVED.

Any and all information, including, among others, wordings, pictures, graphs are the properties of Hangzhou EZVIZ Software Co., Ltd. (hereinafter referred to as “EZVIZ”). This user manual (hereinafter referred to as “the Manual”) cannot be reproduced, changed, translated, or distributed, partially or wholly, by any means, without the prior written permission of EZVIZ. Unless otherwise stipulated, EZVIZ does not make any warranties, guarantees or representations, express or implied, regarding to the Manual.


About this Manual

The Manual includes instructions for using and managing the product. Pictures, charts, images and all other information hereinafter are for description and explanation only. The information contained in the Manual is subject to change, without notice, due to firmware updates or other reasons. Please find the latest version in the EZVIZ™ website (<http://www.ezvizlife.com>).

Revision Record

New release – January, 2021

Trademarks Acknowledgement

EZVIZ™, ™, and other EZVIZ's trademarks and logos are the properties of EZVIZ in various jurisdictions. Other trademarks and logos mentioned below are the properties of their respective owners.

Legal Disclaimer

TO THE MAXIMUM EXTENT PERMITTED BY APPLICABLE LAW, THE PRODUCT DESCRIBED, WITH ITS HARDWARE, SOFTWARE AND FIRMWARE, IS PROVIDED “AS IS”, WITH ALL FAULTS AND ERRORS, AND EZVIZ MAKES NO WARRANTIES, EXPRESS OR IMPLIED, INCLUDING WITHOUT LIMITATION, MERCHANTABILITY, SATISFACTORY QUALITY, FITNESS FOR A PARTICULAR PURPOSE, AND NON-INFRINGEMENT OF THIRD PARTY. IN NO EVENT WILL EZVIZ, ITS DIRECTORS, OFFICERS, EMPLOYEES, OR AGENTS BE LIABLE TO YOU FOR ANY SPECIAL, CONSEQUENTIAL, INCIDENTAL, OR INDIRECT DAMAGES, INCLUDING, AMONG OTHERS, DAMAGES FOR LOSS OF BUSINESS PROFITS, BUSINESS INTERRUPTION, OR LOSS OF DATA OR DOCUMENTATION, IN CONNECTION WITH THE USE OF THIS PRODUCT, EVEN IF EZVIZ HAS BEEN ADVISED OF THE POSSIBILITY OF SUCH DAMAGES.

TO THE MAXIMUM EXTENT PERMITTED BY APPLICABLE LAW, IN NO EVENT SHALL EZVIZ'S TOTAL LIABILITY FOR ALL DAMAGES EXCEED THE ORIGINAL PURCHASE PRICE OF THE PRODUCT.

EZVIZ DOES NOT UNDERTAKE ANY LIABILITY FOR PERSONAL INJURY OR PROPERTY DAMAGE AS THE RESULT OF PRODUCT INTERRUPTION OR SERVICE TERMINATION CAUSED BY: A) IMPROPER INSTALLATION OR USAGE OTHER THAN AS REQUESTED; B) THE PROTECTION OF NATIONAL OR PUBLIC INTERESTS; C) FORCE MAJEURE; D) YOURSELF OR THE THIRD PARTY, INCLUDING WITHOUT LIMITATION, USING ANY THIRD PARTY'S PRODUCTS, SOFTWARE, APPLICATIONS, AND AMONG OTHERS.

REGARDING TO THE PRODUCT WITH INTERNET ACCESS, THE USE OF PRODUCT SHALL BE WHOLLY AT YOUR OWN RISKS. EZVIZ SHALL NOT TAKE ANY RESPONSIBILITIES FOR ABNORMAL OPERATION, PRIVACY LEAKAGE OR OTHER DAMAGES RESULTING FROM CYBER ATTACK, HACKER ATTACK, VIRUS INSPECTION, OR OTHER INTERNET SECURITY RISKS; HOWEVER, EZVIZ WILL PROVIDE TIMELY TECHNICAL SUPPORT IF REQUIRED. SURVEILLANCE LAWS AND DATA PROTECTION LAWS VARY BY JURISDICTION. PLEASE CHECK ALL RELEVANT LAWS IN YOUR JURISDICTION BEFORE USING THIS PRODUCT IN ORDER TO ENSURE THAT YOUR USE CONFORMS TO THE APPLICABLE LAW. EZVIZ SHALL NOT BE LIABLE IN THE EVENT THAT THIS PRODUCT IS USED WITH ILLEGITIMATE PURPOSES.

IN THE EVENT OF ANY CONFLICTS BETWEEN THE ABOVE AND THE APPLICABLE LAW, THE LATTER PREVAILS.

目錄

概覽	1
1. 包裝內容.....	1
2. 基本說明.....	1
取得 EZVIZ 應用程式	1
準備工作	2
1. 拆下蓋子.....	2
2. 撕下絕緣條	2
新增裝置	3
1. 方法一：掃描 QR 代碼來新增	3
2. 方法二：透過閘道器新增.....	3
安裝	4
EZVIZ 應用程式上的操作	5
1. 首頁.....	5
2. 設定.....	5

概覽

1. 包裝內容



開啟 / 關閉感測器



雙面膠帶



法規資訊



快速入門指南

2. 基本說明



名稱	說明
重設按鈕	按住按鈕 5 秒以上，使感測器進入裝置新增模式。
LED 指示燈	<ul style="list-style-type: none">快速閃藍燈：感測器進入裝置新增模式。快速閃藍燈一下：已觸發開門 / 關門訊號。

取得 EZVIZ 應用程式

1. 將手機連線 Wi-Fi (建議)。
2. 在 App Store 或 Google PlayTM 中搜尋「EZVIZ」，下載並安裝 EZVIZ 應用程式。
3. 啟動應用程式並且註冊 EZVIZ 使用者帳戶。



EZVIZ 應用程式

Download on the
App Store

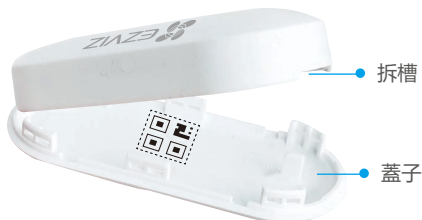
GET IT ON
Google Play

i 如果您已經使用應用程式，請確定其為最新版本。要找到是否有可用的更新，請移至應用程式商店並搜尋 EZVIZ。

準備工作

1. 拆下蓋子

在拆槽處拆下感測器的蓋子。



2. 撕下絕緣條

按照下圖的指示，撕下電池絕緣條。



- i** 當電池電量低時，低電池電量通知將推送到 EZVIZ 應用程式，用以提醒您更換電池。
- 如需更換電池，請購買兩顆 CR1632 電池。
- 更換電池時，請正面朝上插入。
- 觸碰電路板時，雙手請保持乾燥且清潔。

新增裝置

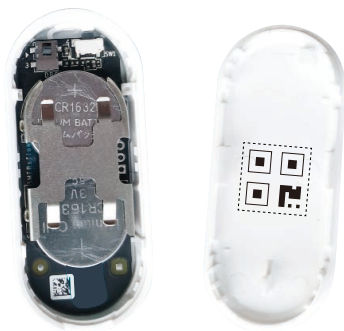
- 開啟 / 關閉感測器應與 EZVIZ 智慧閘道器（以下簡稱「閘道器」）一起使用。請將閘道器新增到 EZVIZ Cloud，然後透過以下兩種方法將感測器新增到閘道器。

1. 方法一：掃描 QR 代碼來新增

- 透過 EZVIZ 應用程式登入您的帳戶，點選新增裝置圖示，隨即顯示 QR 碼掃描介面。
- 掃描蓋子內側或使用手冊上的 QR 碼，然後將感測器新增到閘道器。



- 如下圖所示置放感測器。



- 裝回蓋子。

2. 方法二：透過閘道器新增

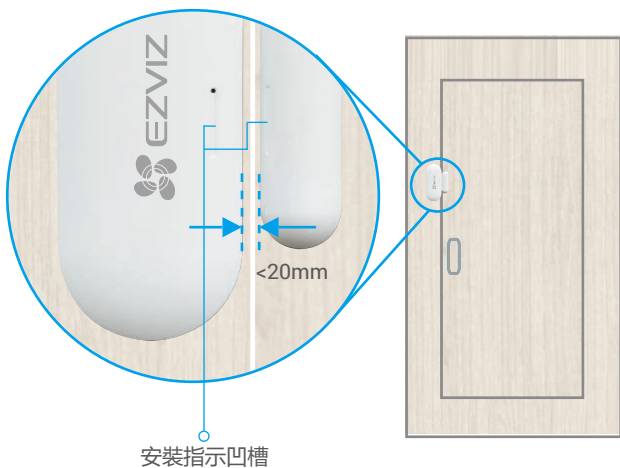
- 透過閘道器新增感測器時，盡量將感測器靠近閘道器置放。

- 使閘道器按照閘道器使用手冊的指示進入裝置新增模式
- 按住重設按鈕 5 秒以上，直到感測器上的指示燈快速閃藍燈，然後感測器將進入新增模式。
- 感測器將自動新增到閘道器。

安裝

- 感測器必須遠離磁場置放，當門窗關閉時，感測器與磁鐵的距離應小於 20mm。
- 貼上感測器之前，請先清潔門窗表面的灰塵。請勿將感測器貼在用石灰粉刷過的牆壁上。
- 感測器和磁鐵上的安裝指示凹槽應放在一起並對齊（如下圖所示）。
- 安裝高度不超過 1.8m。
- 感測器的工作溫度範圍是 $-10^{\circ}\text{C}\sim 55^{\circ}\text{C}$ 。

1. 選取可安裝感測器的位置。
2. 將感測器固定在您用雙面膠帶所選擇的位置。
3. 按住感測器約 20 秒。



EZVIZ 應用程式上的操作

i 應用程式介面可能因版本更新而有所不同，以您手機安裝的應用程式介面為準。

1. 首頁

啟動 EZVIZ 應用程式，開啟相關閘道器的首頁，您可在頁面上根據需要管理偵測器。

Log (日誌)	偵測器的偵測日誌。
Dismiss (解除)	清除偵測器的警報。

2. 設定

參數	說明
Device Name (裝置名稱)	自訂裝置名稱。
Alarm Settings (警報設定)	啟用後，如果觸發門觸點，將發出警告。 您可以視需要設定通知參數。
Linkage Camera (連結攝影機)	選取要以連線至偵測器的攝影機。一旦連線，攝影機便會在偵測器開啟或關閉時轉向該位置。
Related Devices (相關裝置)	您可看見連接到偵測器的閘道器。
Device Information (裝置資訊)	您可以在這裡檢視裝置資訊。
Share (分享)	分享您的裝置。
Delete Device (刪除裝置)	點選即可將偵測器從 EZVIZ Cloud 刪除。